

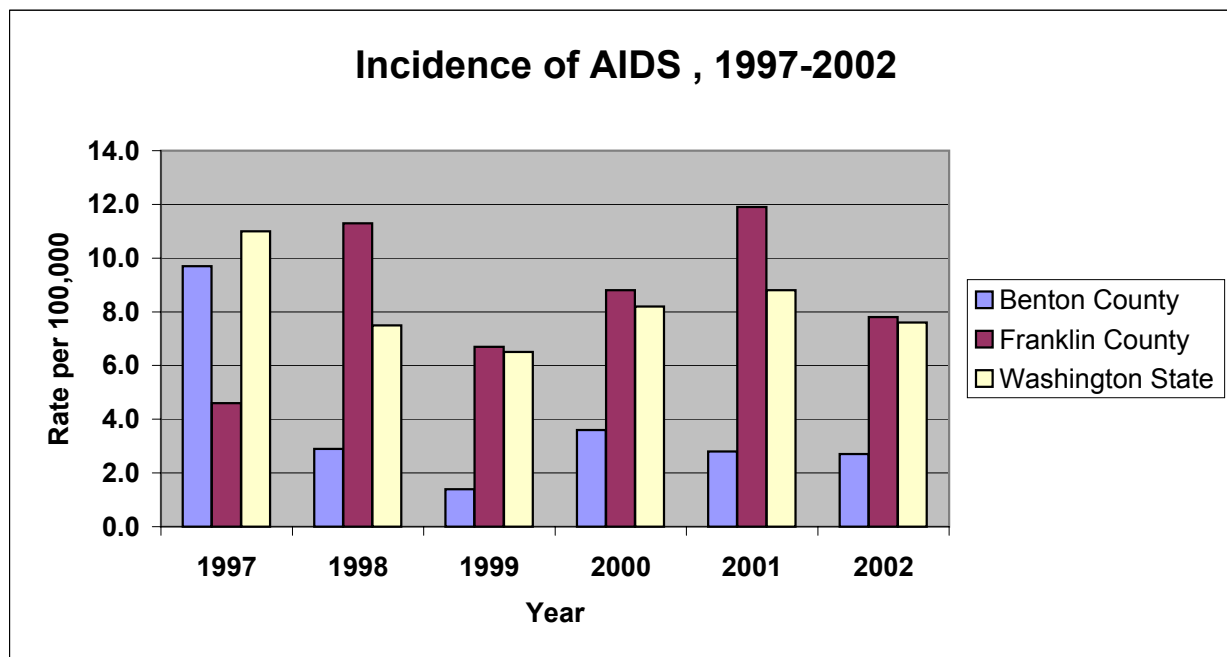
Tables of Selected Communicable Diseases, Benton and Franklin Counties, 1997-2002

The following are Surveillance charts and tables for selected notifiable conditions for Benton and Franklin Counties, with incidence rates from Washington State as a guide for comparison:

Total Population Estimates, 1997-2003			
YEAR	Benton	Franklin	WA State
1997	136505	47207	5663765
1998	137902	47744	5750041
1999	140413	48304	5830847
2000	142475	49347	5894121
2001	144799	50404	5974923
2002	147600	51300	6041700

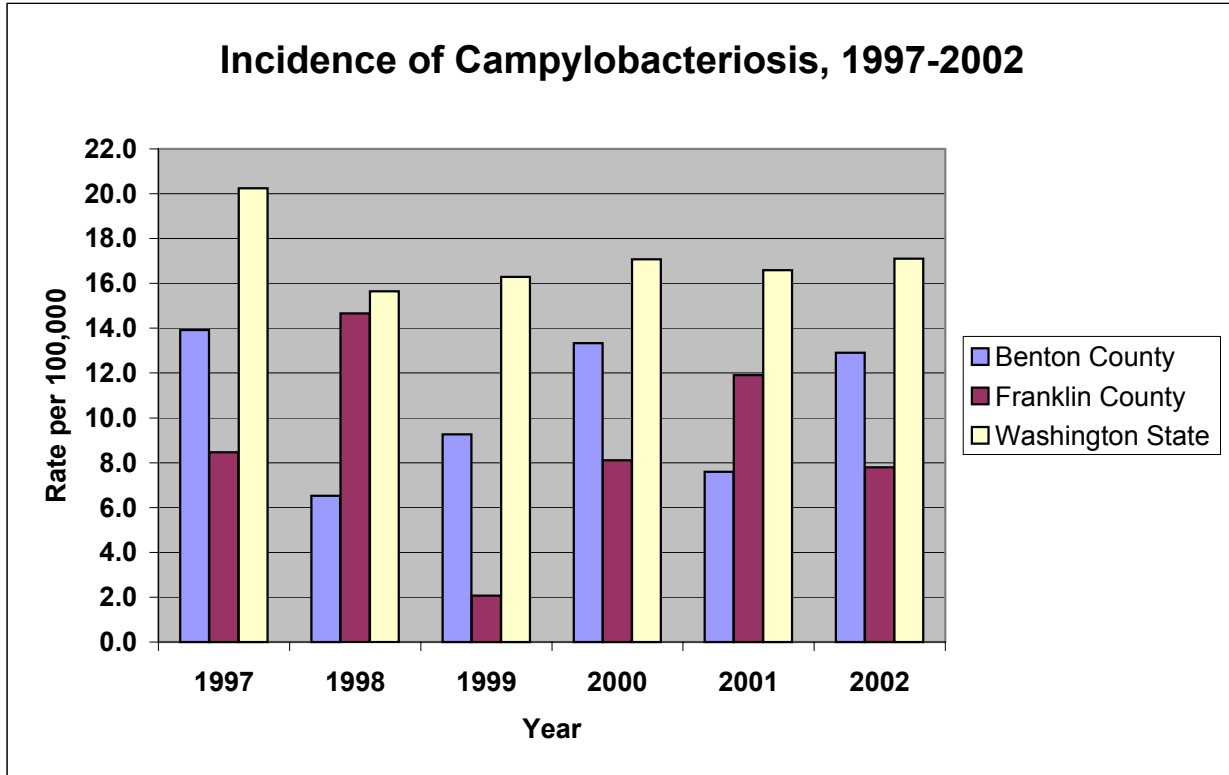
AIDS-New

YEAR	Rate per 100,000			Total Cases		
	Benton	Franklin	WA State	Benton	Franklin	WA State
1997	9.7	4.6	11.0	13	2	618
1998	2.9	11.3	7.5	4	5	424
1999	1.4	6.7	6.5	2	3	377
2000	3.6	8.8	8.2	5	4	478
2001	2.8	11.9	8.8	4	6	524
2002	2.7	7.8	7.6	4	4	457



Campylobacteriosis

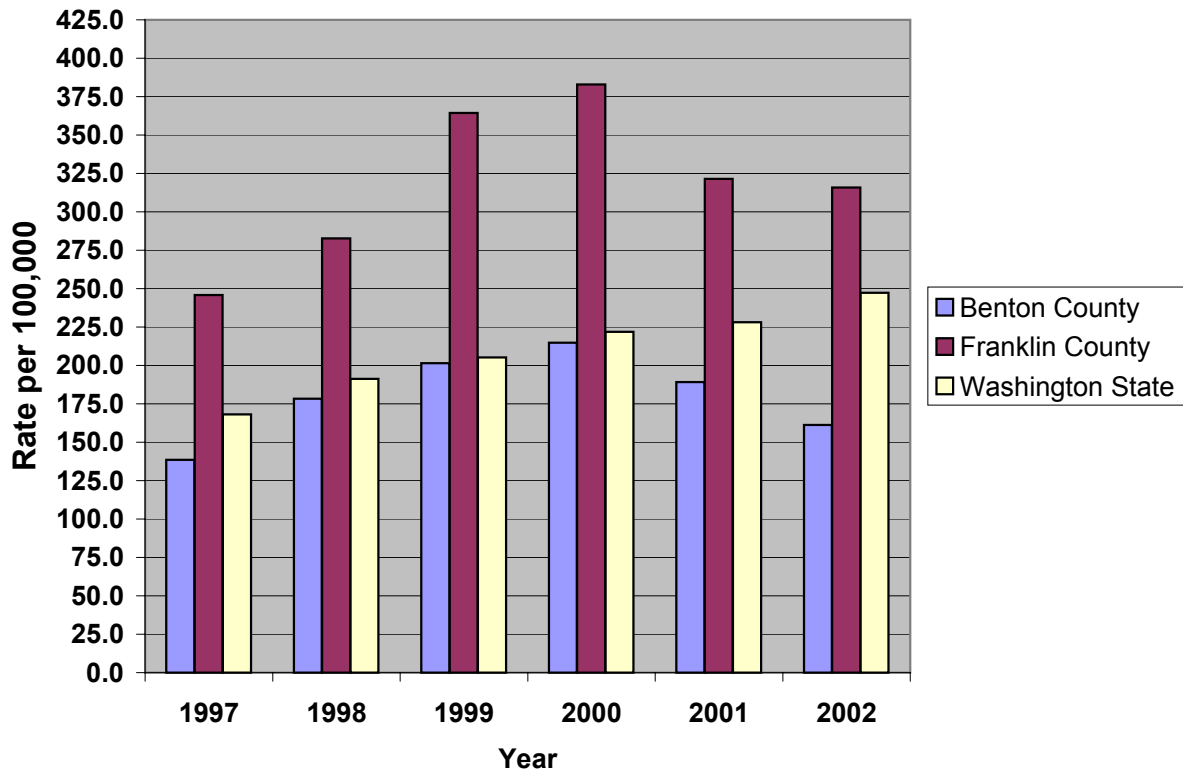
YEAR	Rate per 100,000			Total Cases		
	Benton	Franklin	WA State	Benton	Franklin	WA State
1997	13.9	8.5	20.3	19	4	1147
1998	6.5	14.7	15.7	9	7	900
1999	9.3	2.1	16.3	13	1	950
2000	13.3	8.1	17.1	19	4	1006
2001	7.6	11.9	16.6	11	6	991
2002	12.9	7.8	17.1	19	4	1032



Chlamydia

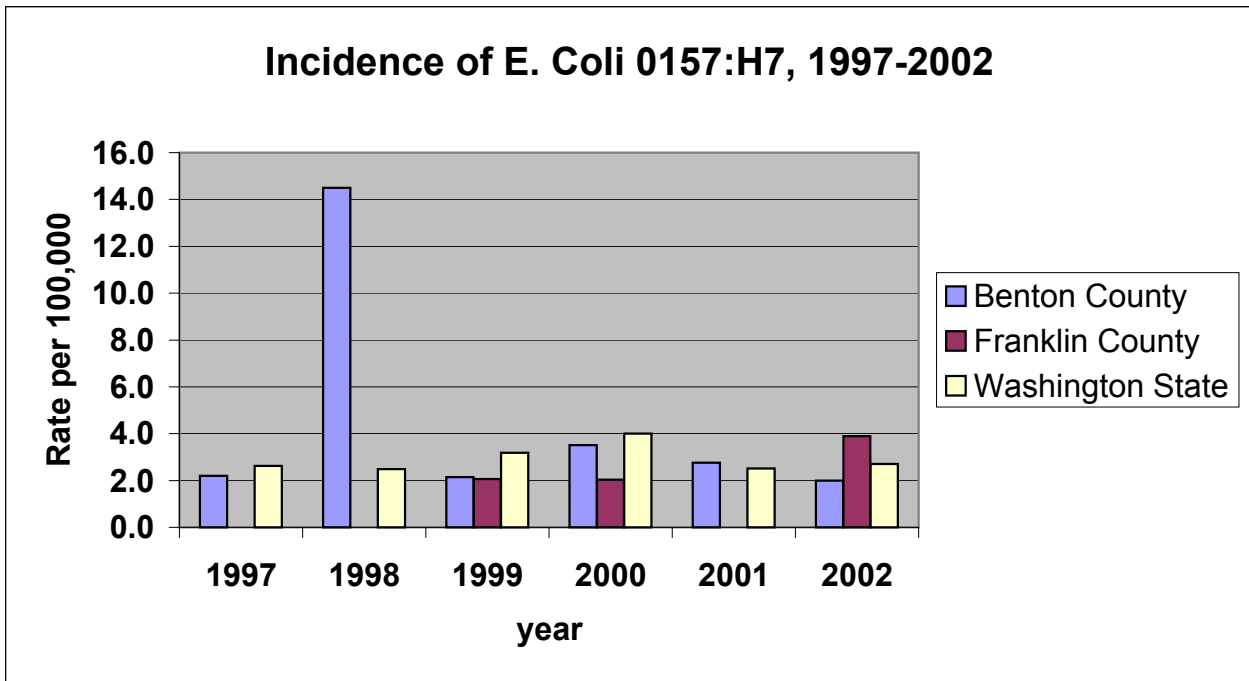
YEAR	Rate per 100,000			Total Cases		
	Benton	Franklin	WA State	Benton	Franklin	WA State
1997	138.5	245.7	168.1	189	116	9523
1998	178.4	282.8	191.3	246	135	10998
1999	201.6	364.4	205.2	283	176	11964
2000	214.8	383.0	221.8	306	189	13072
2001	189.2	321.4	228.1	274	162	13631
2002	161.2	315.8	247.2	238	162	14936

Incidence of Chlamydia, 1997-2002



E.Coli 0157:H7

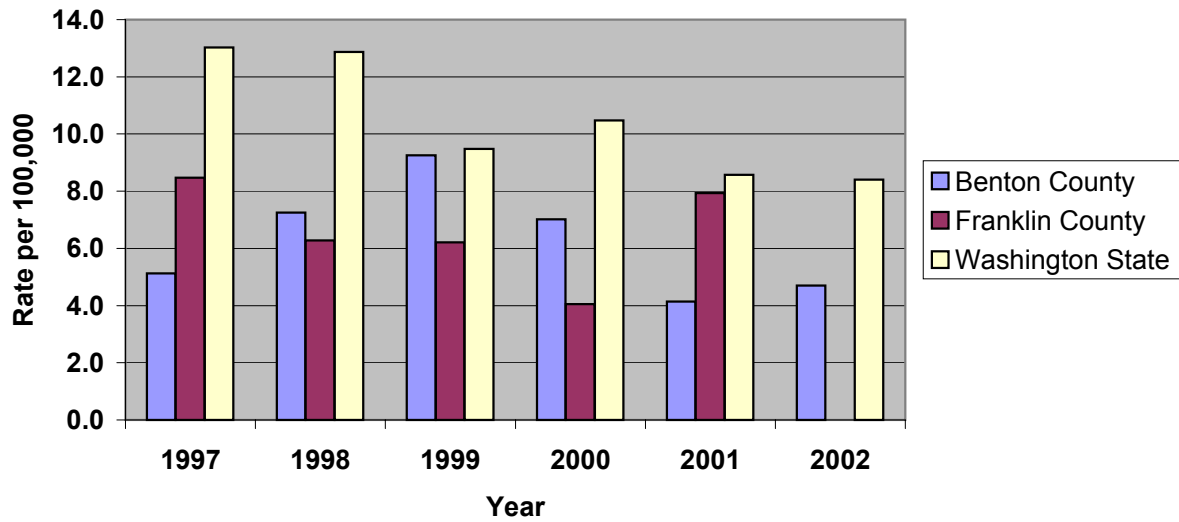
YEAR	Rate per 100,000			Total Cases		
	Benton	Franklin	WA State	Benton	Franklin	WA State
1997	2.2	0.0	2.6	3	0	149
1998	14.5	0.0	2.5	20	0	143
1999	2.1	2.1	3.2	3	1	186
2000	3.5	2.0	4.0	5	1	236
2001	2.8	0.0	2.5	4	0	150
2002	2.0	3.9	2.7	3	2	166



Giardiasis

YEAR	Rate per 100,000			Total Cases		
	Benton	Franklin	WA State	Benton	Franklin	WA State
1997	5.1	8.5	13.0	7	4	738
1998	7.3	6.3	12.9	10	3	740
1999	9.3	6.2	9.5	13	3	553
2000	7.0	4.1	10.5	10	2	617
2001	4.1	7.9	8.6	6	4	512
2002	4.7	0.0	8.4	7	0	510

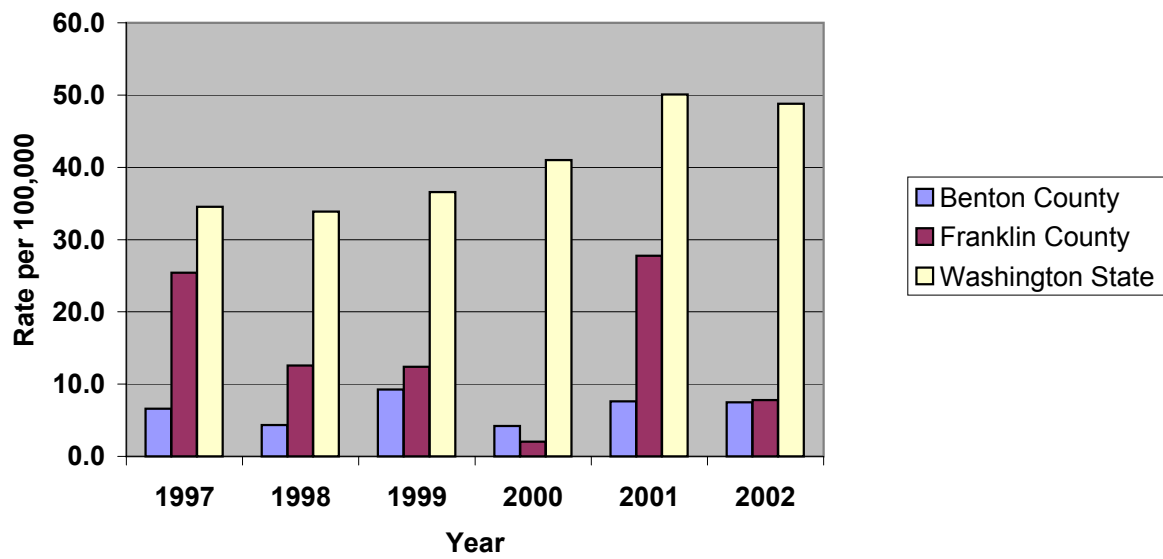
Incidence of Giardiasis, 1997-2002



Gonorrhea

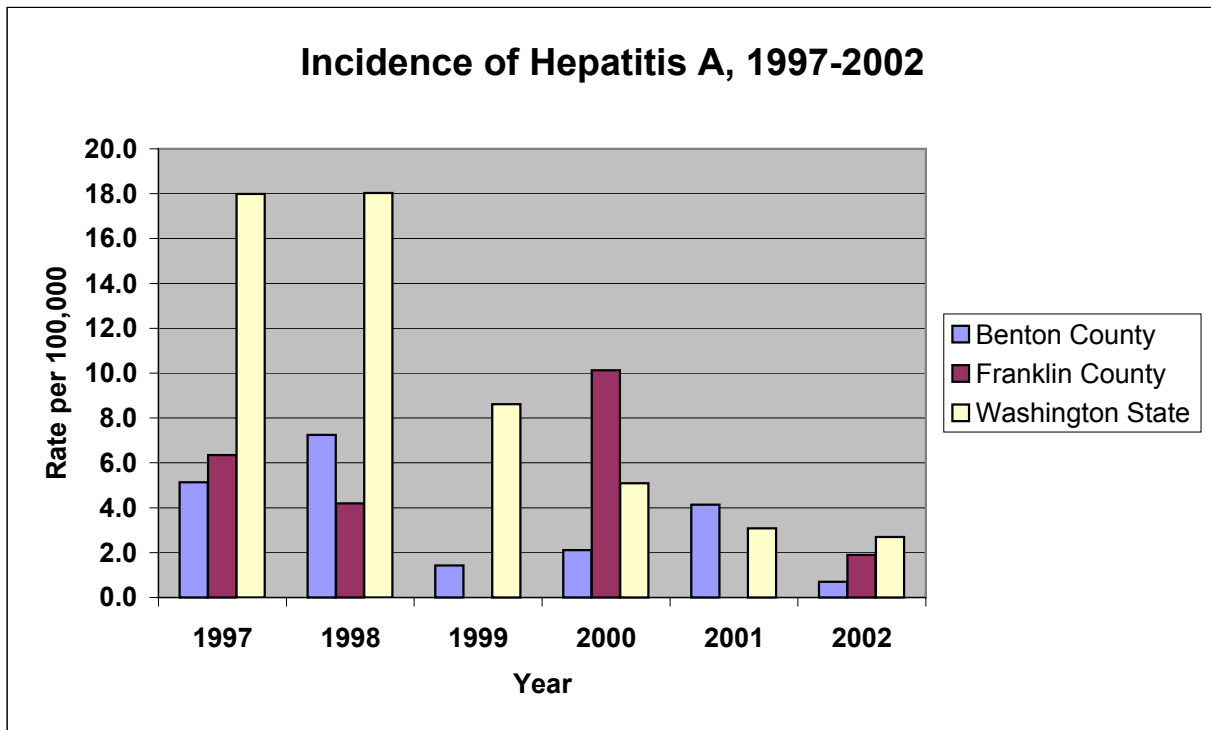
YEAR	Rate per 100,000			Total Cases		
	Benton	Franklin	WA State	Benton	Franklin	WA State
1997	6.6	25.4	34.5	9	12	1955
1998	4.4	12.6	33.9	6	6	1948
1999	9.3	12.4	36.6	13	6	2132
2000	4.2	2.0	41.0	6	1	2418
2001	7.6	27.8	50.1	11	14	2991
2002	7.5	7.8	48.8	11	4	2925

Incidence of Gonorrhea, 1997-2002



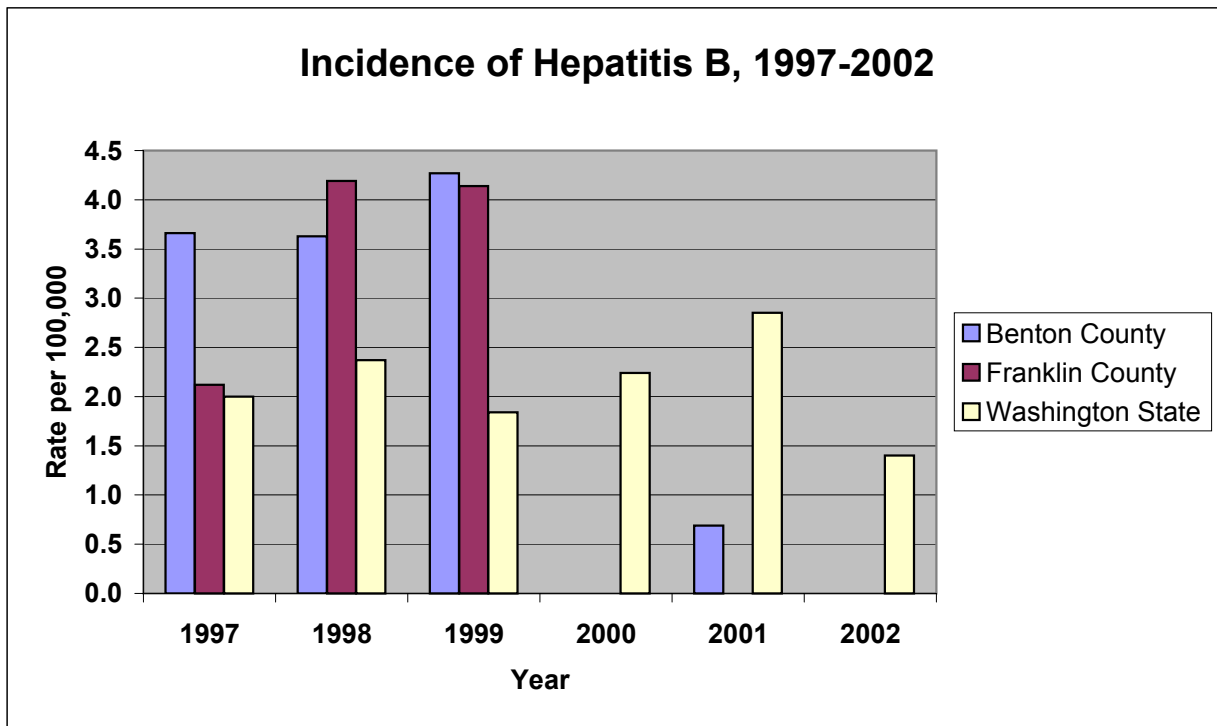
Hepatitis A

YEAR	Rate per 100,000			Total Cases		
	Benton	Franklin	WA State	Benton	Franklin	WA State
1997	5.1	6.4	18.0	7	3	1019
1998	7.3	4.2	18.0	10	2	1037
1999	1.4	0.0	8.6	2	0	502
2000	2.1	10.1	5.1	3	5	300
2001	4.1	0.0	3.1	6	0	184
2002	0.7	1.9	2.7	1	1	162



Hepatitis B

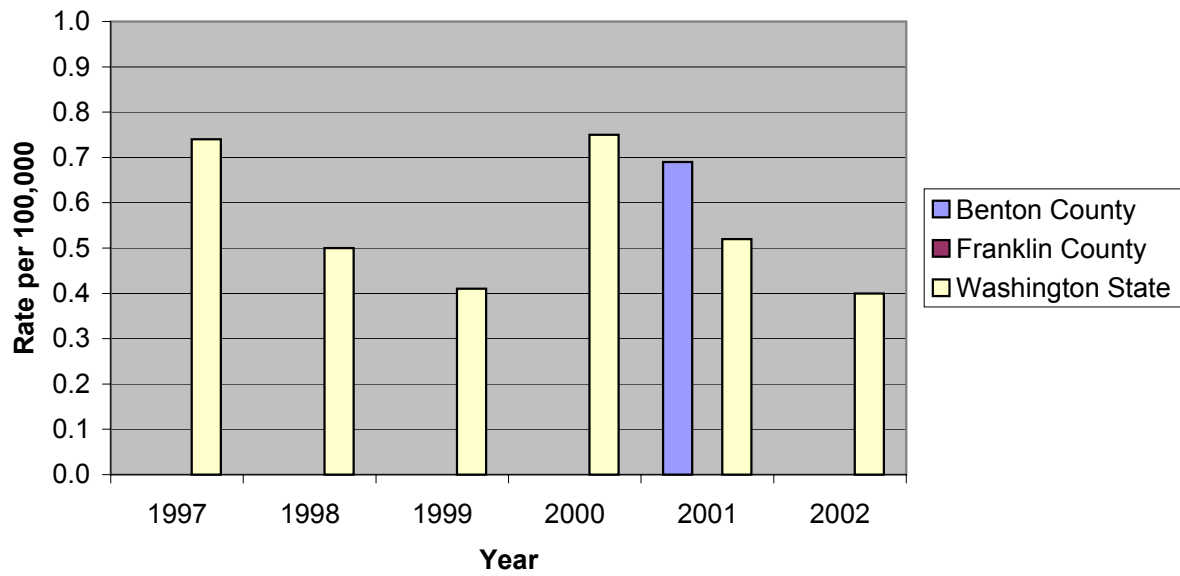
YEAR	Rate per 100,000			Total Cases		
	Benton	Franklin	WA State	Benton	Franklin	WA State
1997	3.7	2.1	2.0	5	1	113
1998	3.6	4.2	2.4	5	2	136
1999	4.3	4.1	1.8	6	2	107
2000	0.0	0.0	2.2	0	0	132
2001	0.7	0.0	2.9	1	0	170
2002	0.0	0.0	1.4	0	0	83



Hepatitis C

YEAR	Rate per 100,000			Total Cases		
	Benton	Franklin	WA State	Benton	Franklin	WA State
1997	0.0	0.0	0.7	0	0	42
1998	0.0	0.0	0.5	0	0	29
1999	0.0	0.0	0.4	0	0	24
2000	0.0	0.0	0.8	0	0	44
2001	0.7	0.0	0.5	1	0	31
2002	0.0	0.0	0.4	0	0	27

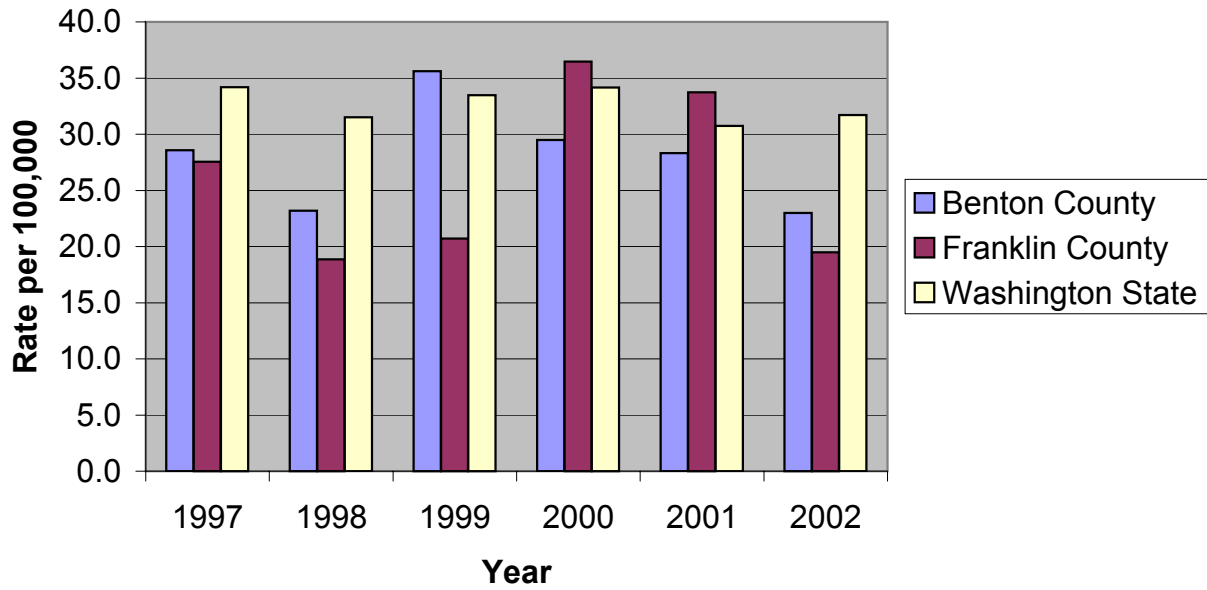
Incidence of Hepatitis C, 1997-2002



Herpes Simplex

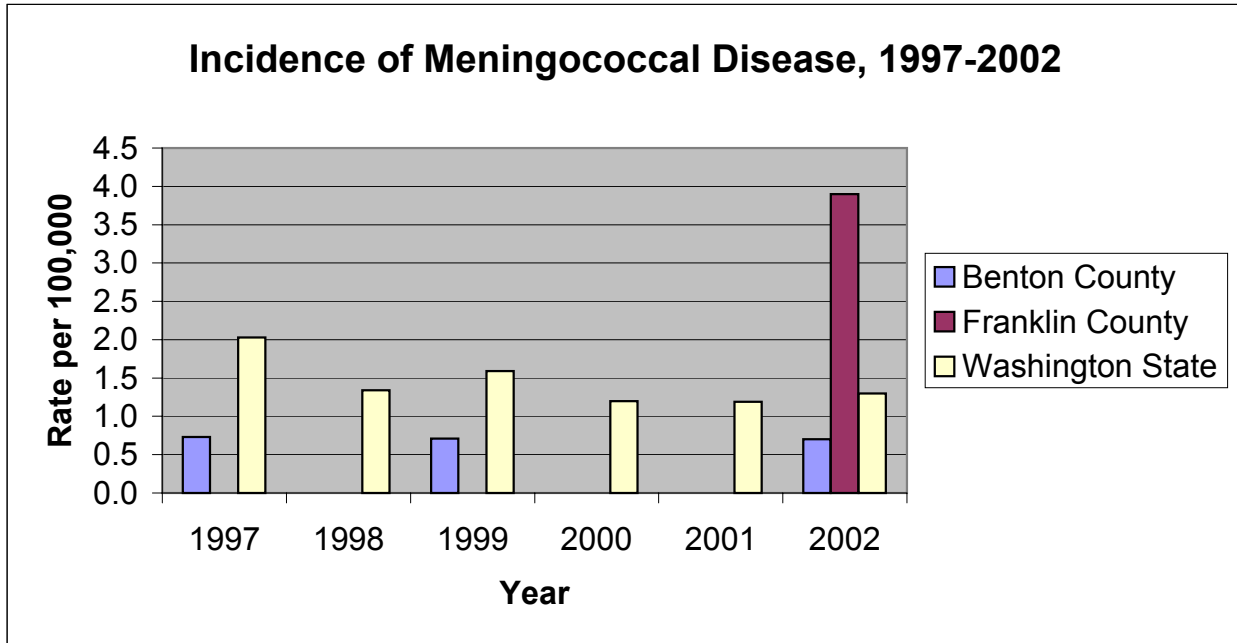
YEAR	Rate per 100,000			Total Cases		
	Benton	Franklin	WA State	Benton	Franklin	WA State
1997	28.6	27.5	34.2	39	13	1937
1998	23.2	18.9	31.5	32	9	1811
1999	35.6	20.7	33.5	50	10	1952
2000	29.5	36.5	34.2	42	18	2013
2001	28.3	33.7	30.7	41	17	1836
2002	23.0	19.5	31.7	34	10	1914

Incidence of Herpes Simplex, 1997-2002



Meningococcal Disease

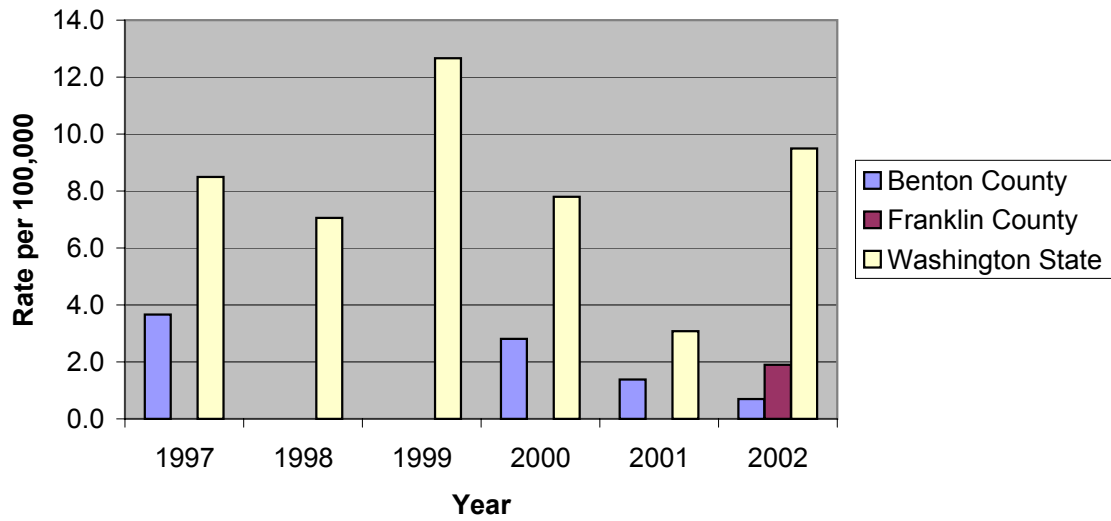
YEAR	Rate per 100,000			Total Cases		
	Benton	Franklin	WA State	Benton	Franklin	WA State
1997	0.7	0.0	2.0	1	0	115
1998	0.0	0.0	1.3	0	0	77
1999	0.7	0.0	1.6	1	0	93
2000	0.0	0.0	1.2	0	0	71
2001	0.0	0.0	1.2	0	0	71
2002	0.7	3.9	1.3	1	2	76



Pertussis

YEAR	Rate per 100,000			Total Cases		
	Benton	Franklin	WA State	Benton	Franklin	WA State
1997	3.7	0.0	8.5	5	0	481
1998	0.0	0.0	7.1	0	0	406
1999	0.0	0.0	12.7	0	0	738
2000	2.8	0.0	7.8	4	0	460
2001	1.4	0.0	3.1	2	0	184
2002	0.7	1.9	9.5	1	1	575

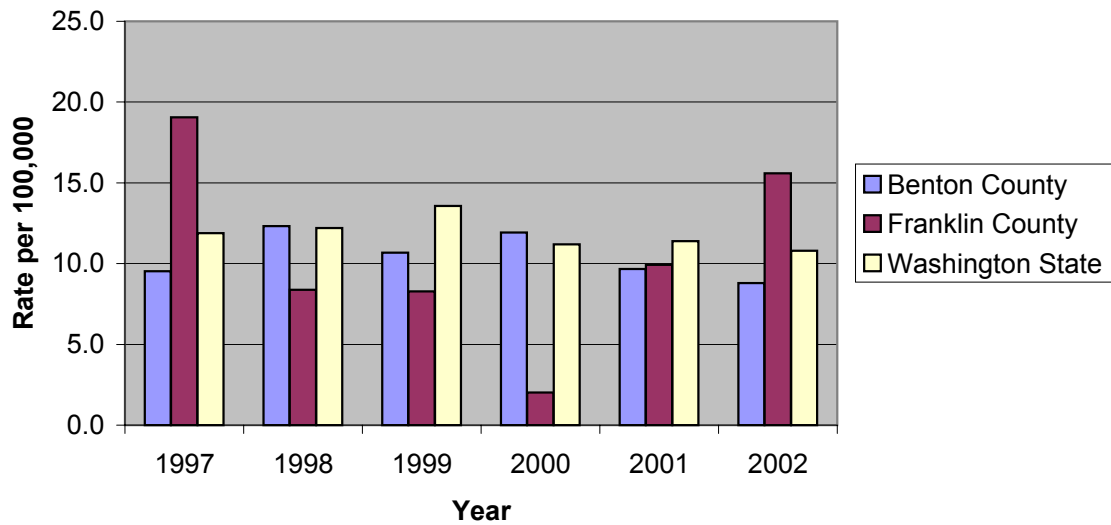
Incidence of Pertussis, 1997-2002



Salmonellosis

YEAR	Rate per 100,000			Total Cases		
	Benton	Franklin	WA State	Benton	Franklin	WA State
1997	9.5	19.1	11.9	13	9	673
1998	12.3	8.4	12.2	17	4	702
1999	10.7	8.3	13.6	15	4	791
2000	11.9	2.0	11.2	17	1	660
2001	9.7	9.9	11.4	14	5	681
2002	8.8	15.6	10.8	13	8	655

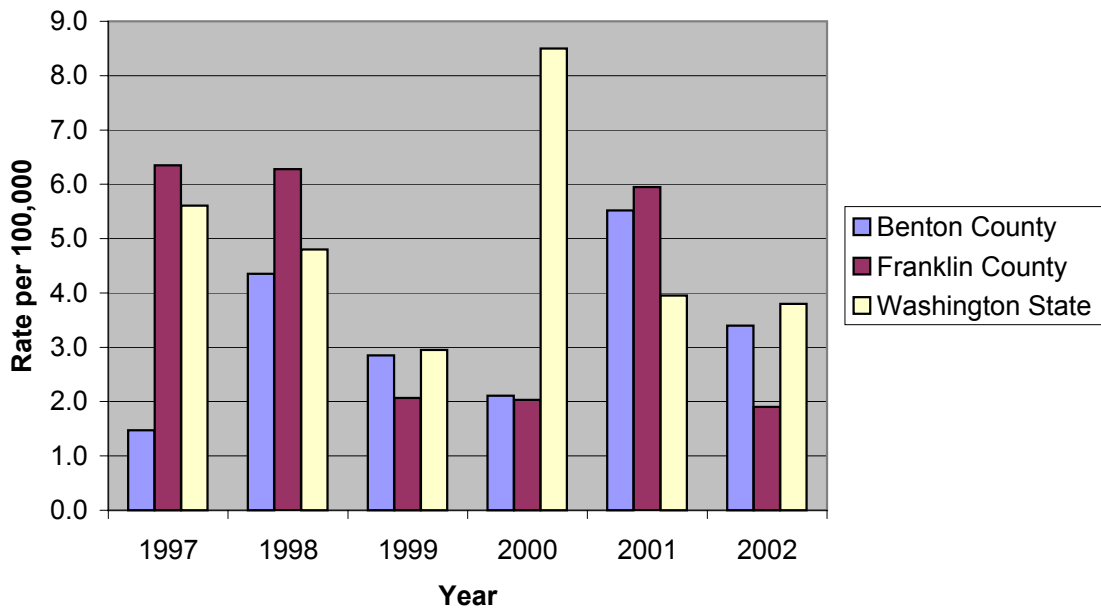
Incidence of Salmonellosis, 1997-2002



Shigellosis

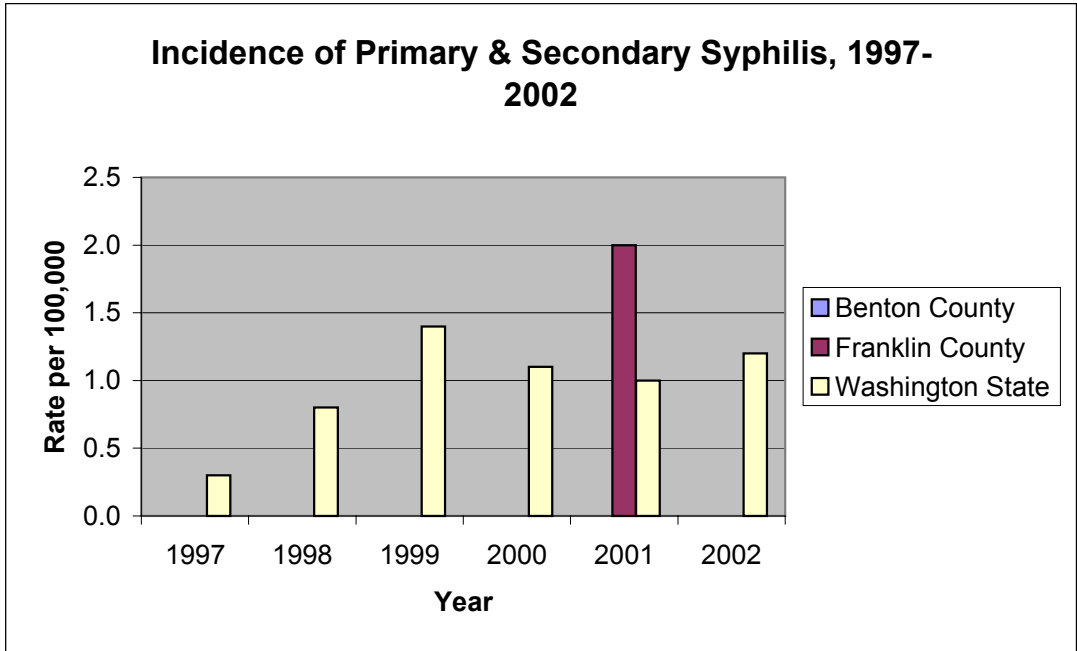
YEAR	Rate per 100,000			Total Cases		
	Benton	Franklin	WA State	Benton	Franklin	WA State
1997	1.5	6.4	5.6	2	3	318
1998	4.4	6.3	4.8	6	3	276
1999	2.9	2.1	3.0	4	1	172
2000	2.1	2.0	8.5	3	1	501
2001	5.5	6.0	4.0	8	3	236
2002	3.4	1.9	3.8	5	1	230

Incidence of Shigellosis, 1997-2002



Syphilis-Primary & Secondary

YEAR	Rate per 100,000			Total Cases		
	Benton	Franklin	WA State	Benton	Franklin	WA State
1997	0.0	0.0	0.3	0	0	17
1998	0.0	0.0	0.8	0	0	44
1999	0.0	0.0	1.4	0	0	77
2000	0.0	0.0	1.1	0	0	66
2001	0.0	2.0	1.0	0	1	57
2002	0.0	0.0	1.2	0	0	70



Tuberculosis

YEAR	Rate per 100,000			Total Cases		
	Benton	Franklin	WA State	Benton	Franklin	WA State
1997	5.8	13.2	5.4	8	6	305
1998	2.2	9.0	4.7	3	4	265
1999	3.6	4.4	4.5	5	2	258
2000	2.1	12.2	4.4	3	6	258
2001	0.7	4.0	4.4	1	2	261
2002	0.7	5.8	4.2	1	3	252

Incidence of Tuberculosis, 1997-2002

